



# SkyView™ Tile

## Spec Sheet

bios



### DESCRIPTION:

Introducing the SkyView™ Tile by BIOS Lighting. SkyView™ represents the next generation of circadian lighting solutions designed to support the human circadian system during the daytime and evening hours. SkyView™ is a groundbreaking light that can deliver the targeted m-EDI of 250 lux on the vertical plane of the eye, as recommended by both the WELL Building Standard and RP-46-23 from the IES. It's the only luminaire on the market that provides truly immersive circadian lighting while meeting North America's most stringent energy codes. The SkyView™ Tile has two versions: Daylight 0-10 V or Daylight and Evening, which can be operated via 0-10 V or DALI protocol.

### SkyView™ LIGHTING SYSTEM FEATURES:

- Offers the highest melanopic ratio of lighting on the market today: 1.1 in daytime mode
- Strengthens circadian rhythms through an electric circadian lighting system with patented GCO™ (Gradient Circadian Optimization) Technology, providing the health benefits of natural sunlight indoors
- Volumetric light distribution maintains uniformity ratios of <2:1
- Proven to boost mood, focus and alertness
- Declare label, Red List Approved
- 0.4 W/ft² on a 10 x 10 grid
- Quick Ship Available on the Daylight Version
- L90 at 60,000 hours





# SkyView™ Tile

## Spec Sheet

bios

PROJECT: \_\_\_\_\_

TYPE: \_\_\_\_\_

### PRODUCT ORDERING GUIDE

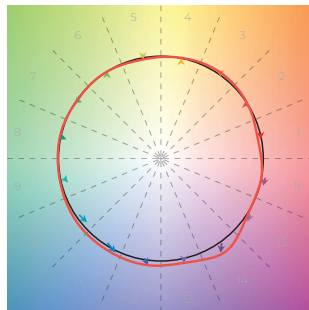
Example: SVT-2x2-4000lm-DO-SD-MVOLT-QS

SVT	—	2x2	—		—	DO-SD	—	MVOLT	—		—	
Product ID		Fixture Type		Lumen Output								
SVT: SkyView™ Tile		2x2		3000 lm								
				4000 lm								
				5000 lm								

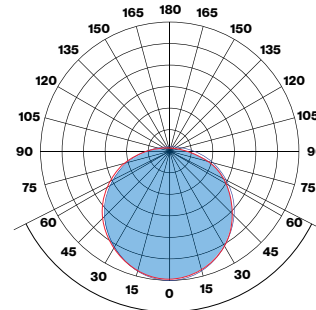
Day/Night/Dimming Interface	Voltage	Shipping	Color
DO - SD: Day only with 0-10 V Dimming	MVOLT: 120 - 277 V	QS: Quick Ship (available only for 4000 lm)	Leave blank for White
	347 V* - consult the factory	ST: Standard Lead Time	

### COLOR QUALITY

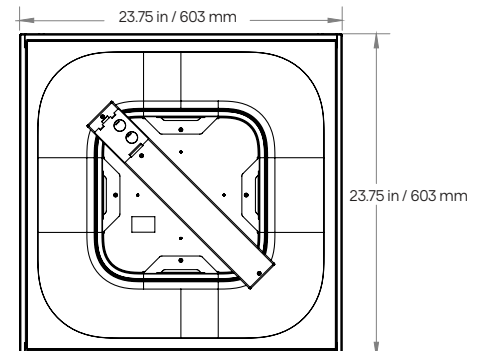
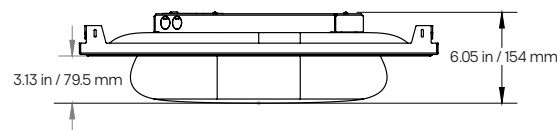
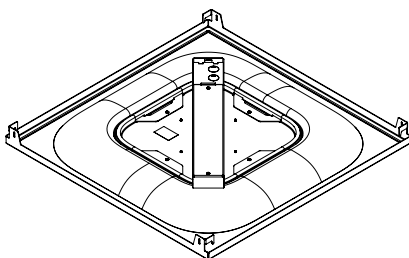
CRI	≥ 90
R9	≥ 90
TM-30	
Rg	102
Rf	90



### LIGHT PERFORMANCE



### DIMENSIONS



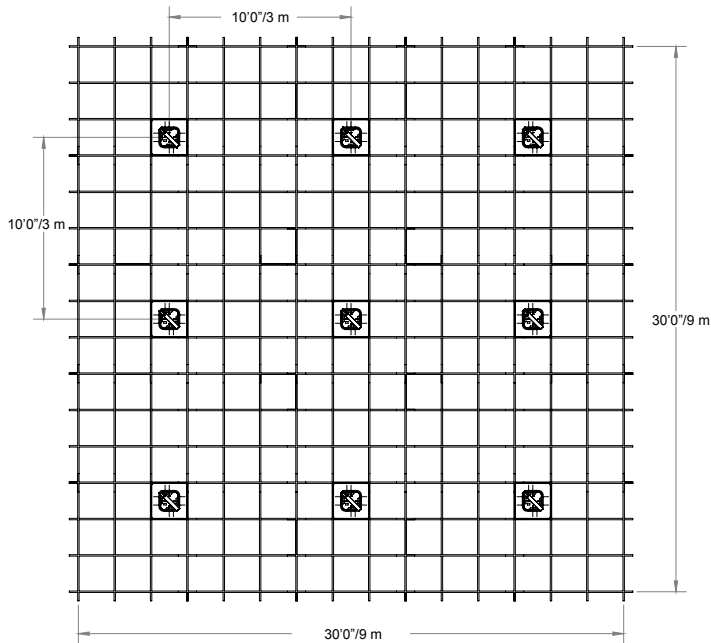


# SkyView™ Tile

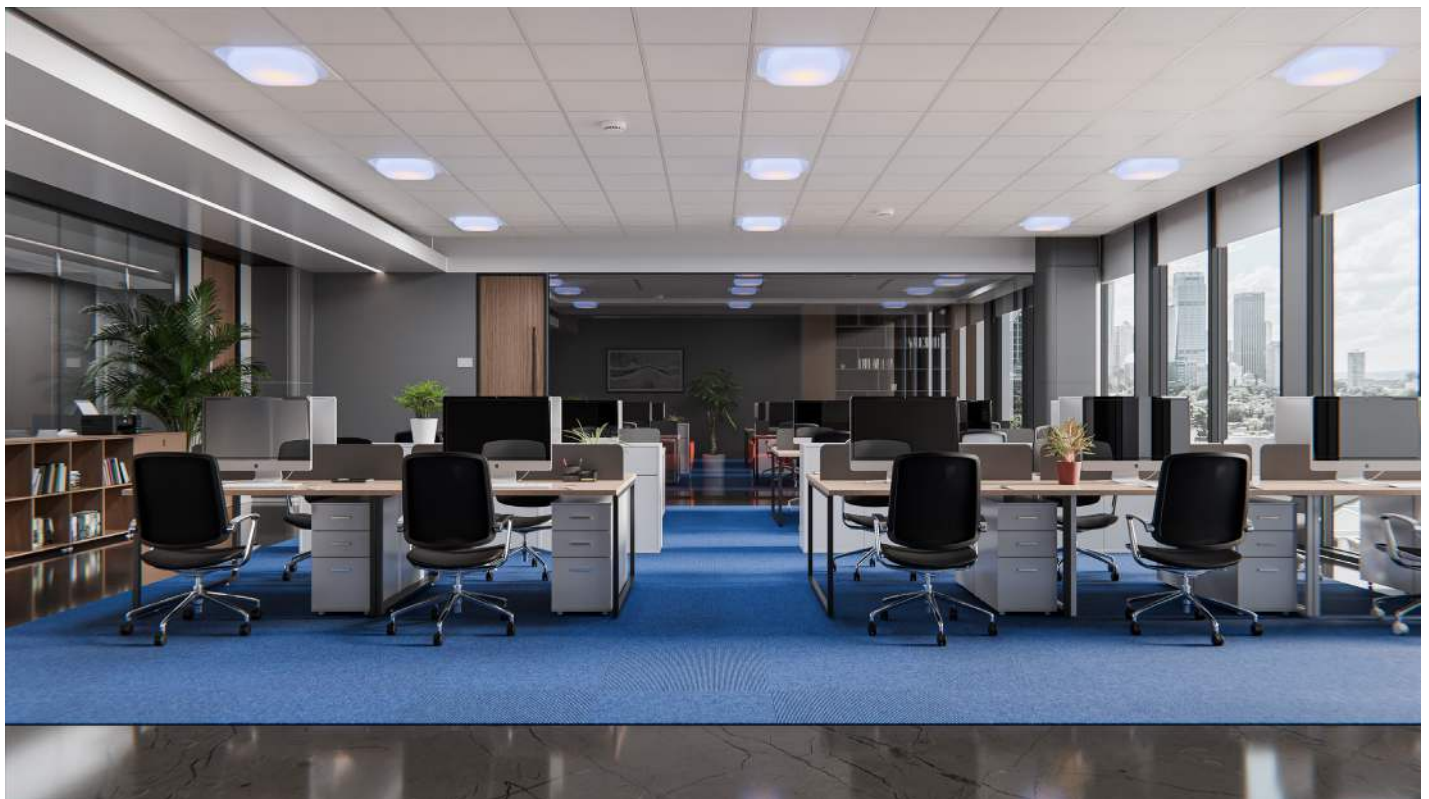
## Spec Sheet

bios

### LIGHTING LAYOUT



Example placement of 4000 lumen fixture on a 9' / 2.74 m ceiling, achieving 30 FC / 300 lux task plane luminance and 250 melanopic equivalent daylight illuminance (m- EDI).





# SkyView™ Tile

## Spec Sheet

bios

## TECHNICAL SPECIFICATIONS

### CONSTRUCTION

- Formed 23 ga. steel housing
- Universal T-bar clips, seismic restraint tabs/tie-offs
- High reflectance diffuser white matte powder coat

### OPTICAL

- Patented SkyView™ GCO™ (Gradient Circadian Optimization) Technology light engine
- Precision molded high transmittance LLDPE plastic diffuser that is recyclable
- Long-life LED system designed for typical TM21 lumen maintenance  $\geq$  L90 @ 60,000 h
- Available in 4000 and 5000-lumen packages with CRI  $\geq$  90 and R9  $\geq$  80, all with color-accurate binning  $\leq$  2 SDCM

### ELECTRICAL

- Integral high-efficiency drivers for 50–60 Hz, 120–277 V
- Power Factor  $> 0.90$
- Total Harmonic Distortion  $< 20\%$
- Dim level: Standard dim to dark 100-3% with Day/Evening 100-0.01%
- Surge Protection: Meets ANSI C82.11 spec and ANSI/IEEE C62.41
- Inrush Current: Meets NEMA 410
- Inrush Current: Meets NEMA 410

### ENVIRONMENT

- Designed for use in dry or damp indoor locations with ambient temperatures of 0–30 °C or 32–86 °F IP22 rating
- Not suitable for natatorium environments.

### CARE

- Clean only with a slightly water-damp, soft, clean cloth.

### WEIGHT

- Maximum 10 lbs (4.54 kg) with standard driver

### WARRANTY

- 5-year limited warranty on all components and workmanship

### INDEPENDENT TESTING

- IESNA LM79
- IESNA LM80 (LED @ 9,000 or 10,000 h)

### APPROVALS

- UL Listed (USA + Canada)
- RoHS Certificate of Conformity